

DEPARTMENT OF THE ARMY TECHNICAL MANUAL

**DIRECT SUPPORT AND GENERAL SUPPORT MAINTENANCE
REPAIR PARTS AND SPECIAL TOOLS LISTS (INCLUDING
DEPOT MAINTENANCE REPAIR PARTS AND SPECIAL TOOLS)
INDICATOR, STANDING WAVE RATIO AN/USM-37A
(FSN 6625-197-6910)**

**Headquarters, Department of the Army, Washington, D.C.
20 December 1974**

Current as of 26 September 1974

	Paragraph	Page
SECTION I. INTRODUCTION		
Scope	1-1	2
General	1-2	2
Explanation of columns	1-3	2
Special information	1-4	4
Location of repair parts	1-5	4
Abbreviations (Not applicable)	1-6	4
Reporting of equipment publication improvements	1-7	4
II. REPAIR PARTS LIST		6
III. SPECIAL TOOLS, TEST AND SUPPORT EQUIPMENT (Not applicable)		
IV. INDEX -- FEDERAL STOCK NUMBER AND REFERENCE NUMBER CROSS- REFERENCE TO FIGURE AND ITEM NUMBER		13

***This manual supersedes TM 11-6625-369-36P, 7 December 1970, including all changes.**

SECTION I
INTRODUCTION

1-1. Scope

This manual lists repair parts and special tools required for the performance of direct support, general support, and depot maintenance of the AN/USM-37A. The PCCN for the AN/USM-37A is GTEAEI for all models.

1-2. General

This repair parts and special tools list is divided into the following sections:

a. Repair Parts List - Section II. A list of repair parts authorized for the performance of maintenance at the direct support, general support, and depot level. This repair parts list is arranged in alphabetical order.

b. Special Tools, Test and Support Equipment - Section III. Not applicable.

c. Index - Federal Stock Number and Reference Number Cross-Reference to Figure and Item Number - Section IV. A list, in ascending numerical sequence, of all Federal stock numbers appearing in the listings, followed by a list, in alphanumeric sequence, of all reference numbers appearing in the listings. Federal stock number and reference numbers are cross-referenced to each illustration figure and item number or reference designation appearance.

1-3. Explanation of Columns

The following provides an explanation of columns found in the tabular list.

a. Source, Maintenance, and Recoverability Codes (SMR).

(1) *Source code.* Indicates the manner of acquiring support items for maintenance, repair, or overhaul of end items. Source codes are —

Code	Explanation
PA --	Item procured and stocked for anticipated or known usage.
PB --	Item procured and stocked for insurance purposes because essentiality dictates that a minimum quantity be available in the supply systems.
PC --	Item procured and stocked and which otherwise would be coded PA except that it is deteriorative in nature.
PD --	Support item, excluding support equipment, procured for initial issue or outfitting and stocked only for subsequent or additional initial issues or outfittings. Not subject to automatic replenishment.

Code	Explanation
PE --	Support equipment procured and stocked for initial issue or outfitting to specified maintenance repair activities.
PF --	Support equipment which will not be stocked but which will be centrally procured on demand.
PG --	Item procured and stocked to provide for sustained support for the life of the equipment. It is applied to an item peculiar to the equipment which because of probable discontinuance or shutdown of production facilities would prove uneconomical to reproduce at a later time.
KD --	An item of depot overhaul/repair kit and not purchased separately. Depot kit defined as a kit that provides items required at the time of overhaul or repair.
KF --	An item of a maintenance kit and not purchased separately. Maintenance kit defined as a kit that provides an item that can be replaced at organizational or direct support or general support levels of maintenance.
KB --	Item included in both a depot overhaul/repair kit and a maintenance kit.
MO --	Item to be manufactured or fabricated at organizational level.
MF --	Item to be manufactured or fabricated at direct support maintenance level.
MH --	Item to be manufactured or fabricated at general support maintenance level.
MD --	Item to be manufactured or fabricated at depot maintenance level.
AO --	Item to be assembled at organizational level.
AF --	Item to be assembled at direct support maintenance level.
AH --	Item to be assembled at general support maintenance level.
AD --	Item to be assembled at depot maintenance level.
XA --	Item is not procured or stocked because the requirements for the item will result in the replacement of the next higher assembly.
XB --	Item is not procured or stocked. If not available through salvage, requisition.
XC --	Installation drawing, diagram instruction sheet, field service drawing, that is identified by manufacturers' part number.

ED— Support items can be requisitioned with justification.

NOTE

Cannibalization or salvage may be used as a source of supply for any items source coded above except those coded XA and aircraft support items as restricted by AR 700-42.

(2) **Maintenance code.** Maintenance codes are assigned to indicate the levels of maintenance authorized to USE and REPAIR support items. The maintenance codes are entered in the third and fourth positions of the Uniform SMR Code Format as follows-

(a) **Use (third position).** The maintenance code entered in the third position indicates the lowest maintenance level authorized to remove, replace, and use the support item. The maintenance code entered in the third position indicates one of the following levels of maintenance.

Code	Application/Explanation
O	Support item is removed, replaced, used at the organizational level of maintenance.

NOTE

A code "c" may be used in this position to denote crew or operator maintenance performed within organizational maintenance.

F	Support item is removed, replaced, used at the direct support maintenance level
H	Support item is removed, replaced, used at the general support maintenance
D	Support items that are removed, replaced, used at depot only.

(b) **Repair (fourth position).** The maintenance code entered in the fourth position indicates whether the item is to be repaired and identifies the lowest maintenance level with the capability to perform complete repair (i.e., all authorized maintenance functions). When a maintenance code is not used a dash (-) sign is entered. For multi-service equipment/systems or when a code is entered, this position will contain one of the following maintenance codes as assigned by the service(s) that require the code —

Code	Application/Explanation
O	The lowest maintenance level capable of complete repair of the support item is the organizational level.
F	The lowest maintenance level capable of complete repair of the support item is direct support.
H	The lowest maintenance level capable of complete repair of the support item is

general support.

D— The lowest maintenance level capable of complete repair of the support item is the depot level.

L— Repair restricted to designated Specialized Repair Activity.

Z— Non-repairable. No repair is authorized.

B— No repair is authorized. The item may be reconditioned by adjusting, lubricating, etc., at the user level. No parts or special tools are procured for the maintenance of this item.

(3) **Recoverability code.** Recoverability codes are assigned to support items to indicate the disposition action on unserviceable items. The recoverability code is entered in the fifth position of the uniform SMR Code Format as follows-

Code	Explanation
Z	Nonrepairable item. When unserviceable, condemn and dispose at the level indicated in the first digit of the maintenance code
O	Repairable item. When uneconomically repairable, condemn and dispose at organizational level.
F	Repairable item. When uneconomically repairable, condemn and dispose at the direct support level.
H	Repairable item. When uneconomically repairable, condemn and dispose at the general support level.
D	Repairable item. When beyond lower level repair capability, return to depot. Condemnation and disposal not authorized below depot level.
L	Repairable item. Repair, condemnation, and disposal not authorized below depot/Specialized Repair Activity level.
A	Item requires special handling or condemnation procedures because of specific reasons (ia, precious metal content & high dollar value, critical material or hazardous materials)

b. **Federal Stock Number.** Indicates the Federal stock number assigned to the item.

NOTE

For requisitioning purposes the Federal stock number must be converted to the National stock number by adding "-00-" after the Federal stock classification (FSC) code (first four digits). For example, FSN 6625-553-0142 converts to NSN 6625-00-553-0142.

c. Description. Indicates the Federal item name and a minimum description required to identify the item. The last line indicates the reference number followed by the applicable Federal Supply Code for Manufacturer (FSCM) in parentheses. The FSCM is used as an element in item identification to designate manufacturer or distributor or Government agency, etc., and is identified in SB 708-42.

d. Unit of Measure (U/M). Indicates the standard or basic quantity by which the listed item is used in performing the actual maintenance function. This measure is expressed by a two-character alphabetical abbreviation; e.g., ea, in, pr, etc., and is the basis used to indicate quantities and allowances in subsequent columns. When the unit of measure differs from the unit of issue, the lowest unit of issue that will satisfy the required units of measure will be requisitioned.

e. Quantity Incorporated in Unit. This column indicates the quantity of the item used in the equipment. Subsequent appearances of the same item in the same assembly are indicated by the letters "REF".

f. 30-Day DS/GS Maintenance Allowances.

NOTE

Allowances in GS column are for GS maintenance only.

(1) The repair parts indicated by asterisk entries in separate allowance columns for DS and GS represent those authorized for use at that category of maintenance to be requisitioned on an "as required" basis, until stockage is based on demand in accordance with AR 710-2.

(2) Allowance quantities are indicated in the special tool lists section for special tools, TMDE, and other support equipment.

g. 1-Year Allowances Per 100 Equipments/Contingency Planning Purposes. Column intentionally left blank

h. Depot Maintenance Allowance Per 100 Equipments. This column indicates opposite the first appearance of each item the total quantity authorized for depot maintenance of 100 equipments.

i. Illustration. This column is divided as follows:

(1) **Figure number.** Not applicable.

(2) **Item number.** Indicates the item number or reference designation used to reference the item

1-4. Special Information

a. Usable on codes are included in column 3. Uncoded items are applicable to all models. Identification of the usable on codes used in this publication are --

<i>Code</i>	<i>Used on</i>
A92	AN/USM-37A

(Next printed page is 6)

b. The following publication pertains to the AN/USM-37A and its components:
TM 11-6625-369-20P Organizational Maintenance Repair Parts and Special Tools Lists: Indicator, Standing Wave Ratio AN/USM-37A.

1-5. Location of Repair Parts

a. This manual contains one cross-reference index (sec IV) to be used to locate a repair part when either the Federal stock number or reference number (manufacturer's part number) is known. The first column in the index is prepared in numerical or alphanumeric sequence in ascending order. The reference numbers (manufacturer's part numbers) are listed immediately following the last listed Federal stock number in the index of Federal stock numbers.

b. When the Federal stock number or reference number is known, follow the procedures given in (1) and (2) below.

(1) Refer to the index of Federal stock numbers (sec IV) and locate the Federal stock number or reference number. The FSN and reference number are cross-referenced to the applicable figure and item number or reference designation.

(2) Refer to the repair parts list (sec II) and locate the figure number (col 10a) and item number or reference designation (col 10b) as noted in the FSN index.

c. When the figure and item number or reference designation are known, scrutinize columns 10a and 10b of the repair parts list (sec II) until the item is located.

d. When the FSN, reference number, figure number, item number and reference designation are not known, scrutinize column 3 of the repair parts list (sec II), which is arranged in alphabetical order.

1-6. Abbreviations

Not applicable.

1-7. Reporting of Equipment Publication Improvements

The reporting of errors, omissions, and recommendations for improving this publication by the individual user is encouraged. Reports should be submitted on DA Form 2028 (Recommended Changes to Publications and Blank Forms) and forwarded direct to Commander, US Army Electronics Command, ATTN: AMSEL-MA-TMDE, Fort Monmouth, NJ, 07703.

SECTION II

TM 11-6625-369-34P

(1) SMR CODE	(2) FEDERAL STOCK NUMBER	(3) DESCRIPTION REFERENCE NUMBER & MFR. COPR USABLE ON CODE	(4) UNIT OF MEAS	(5) QTY INC IN UNIT	(6) 30-DAY BS MAINT ALLOWANCE			(7) 30-DAY BS MAINT ALLOWANCE			(8) 1-YR ALW PER 100 EQUIP CHYCY	(9) DEPCT MAINT ALW PER 100 EQUIP	(10) ILLUSTRATION	
					(a)	(b)	(c)	(a)	(b)	(c)			(a)	(b)
					1-20	21-30	31-100	1-20	21-30	31-100			FIGURE NO.	ITEM NO.
PCOZZ	5340-768-8501	BUMPER, RUBBER 01 F/CABINET FOOT 39-90PS (28480)	EA	4	*	*	*	*	*	*		10		01
PCOZZ	5340-768-8581	BUMPER, RUBBER 02 F/CABINET FOOT 39-90PS (28480)	EA	REF	*	*	*	*	*	*				02
PCOZZ	5340-768-8581	BUMPER, RUBBER 03 F/CABINET FOOT 39-90PS (28480)	EA	REF	*	*	*	*	*	*				03
PCOZZ	5340-768-8581	BUMPER, RUBBER 04 F/CABINET FOOT 39-90PS (28480)	E	REF	*	*	*	*	*	*				04
PAHZZ	6145-284-0579	CABLE POWER ELECTRICAL W1 F/AC POWER. CORD, 7 FT LG C0-Q3MGF3-10-0330 (81349)	EA	1				*	*	*		10		W1
XDOZZ		CAP, ELECTRICAL F/FUSEHOLDER XF1 3420035A2 (75913)	EA	1	*	*	*	*	*	*				
PAHZZ	5910-825-3252	CAPACITOR, FIXED, PAPER DIELECTRIC C6.. 2200 UWF PORN10PCT, 600 VDCW 109P22296 (56289)	EA	1				*	*	*		3		C6
PAHZZ	5910-617-4039	CAPACITOR, FIXED, PAPER DIELECTRIC C4.. 4700 UWF PORN10PCT CPOS1KF472K3 (81349)	EA	2				*	*	*		3		C4
PAHZZ	5910-617-4039	CAPACITOR, FIXED, PAPER DIELECTRIC C5.. 4700 UWF PORN10PCT CPOS1KF472K3 (81349)	EA	REF				*	*	*				C5
XDHZZ		CAPACITOR, FIXED, PAPER DIELECTRIC C1.. 10,000 UWF PORN10PCT, 600 VDCW 109P10396 (56289)	EA	1				*	*	*				C1
XDHZZ		CAPACITOR, FIXED, PAPER DIELECTRIC C7.. 47,000 UWF PORN10PCT, 600 VDCW 109P47396 (56289)	EA	2				*	*	*				C7
XDHZZ		CAPACITOR, FIXED, PAPER DIELECTRIC C8.. 47,000 UWF PORN10PCT, 600 VDCW 109P47396 (56289)	EA	REF				*	*	*				C8
XDHZZ		CAPACITOR, FIXED, PAPER DIELECTRIC C9.. 100,000 UWF PORN10PCT 109P10494 (56289)	EA	3				*	*	*				C9
XDHZZ		CAPACITOR, FIXED, PAPER DIELECTRIC C12.. 100,000 UWF PORN10PCT 109P10494 (56289)	EA	REF				*	*	*				C12
XDHZZ		CAPACITOR, FIXED, PAPER DIELECTRIC C13.. 100,000 UWF PORN10PCT 109P10494 (56289)	EA	REF				*	*	*				C13
PAHZZ	5910-280-6967	CAPACITOR, FIXED, ELECTROLYTIC C3 3... SECT, 10 UF, 450 VDCW FP375-8 (37942)	EA	2				*	*	*		3		C3
PAHZZ	5910-280-6967	CAPACITOR, FIXED, ELECTROLYTIC C11 3... SECT, 10 UF, 450 VDCW FP375-8 (37942)	EA	REF				*	*	*				C11
PAHZZ	5910-497-6596	CAPACITOR, FIXED, ELECTROLYTIC C2 500.. UF, 15 VDCW BR500-15 (14655)	EA	2				*	*	*		3		C2
PAHZZ	5910-667-6596	CAPACITOR, FIXED, ELECTROLYTIC C10 500.. CONTINUED	EA	REF				*	*	*				C10

(1) SMR CODE	(2) FEDERAL STOCK NUMBER	(3) DESCRIPTION: REFERENCE NUMBER & MFR. CODE USABLE ON CODE	(4) UNIT OF MEAS	(5) QTY INC IN UNIT	(6) 30-DAY DS MAINT ALLOWANCE			(7) 30-DAY GS MAINT ALLOWANCE			(8) 1-YR ALW PER 100 EQUIP CNTGTY	(9) DEPOT MAINT ALW PER 100 EQUIP	(10) ILLUSTRATION	
					(a)	(b)	(c)	(g)	(h)	(i)			(a)	(b)
					1-20	21-50	51-100	1-20	21-50	51-100			FIGURE NO.	ITEM NO.
		CONTINUED												
PAOZZ	5935-636-7145	UP 15 VDC BR500-15 (14655) CONNECTOR, PLUG, ELECTRICAL ?1 F/POWER	EA	1	*	*	*	*	*	*	3		P1	
PAHZZ	5935-665-5718	UP121M (81349) CONNECTOR, RECEPTACLE, ELECTRICAL J1...	EA	1				*	*	*	3		J1	
XDOZZ		UG1094U (81349) ELECTRON TUBE V7.....	EA	1	*	*	*	*	*	*			V7	
PAOZZ	5960-262-0151	6B2 (81350) ELECTRON TUBE V5.....	EA	1	*	*	*	*	*	*	100		V5	
PAOZZ	5960-188-0943	6AU56T (81350) ELECTRON TUBE V4.....	EA	1	*	*	*	*	*	*	100		V4	
XDOZZ		6AX56T (80131) ELECTRON TUBE V6.....	EA	1	*	*	*	*	*	*			V6	
PAOZZ	5960-880-0457	6CD6 (81350) ELECTRON TUBE V3.....	EA	1	*	*	*	*	*	*	100		V3	
PAOZZ	5960-166-7664	6DJ8 (81349) ELECTRON TUBE V1.....	EA	2	*	*	*	*	*	*	100		V1	
PAOZZ	5960-164-7664	12AX7 (81350) ELECTRON TUBE V2.....	EA	REF	*	*	*	*	*	*			V2	
PAGZZ	5915-701-4023	12AX7 (81350) FILTER, BK Z1 1000 CYC, TUBE SOCKET...	EA	1	*	*	*	*	*	*	3		Z1	
PACZZ	5920-284-9220	415B4-APS (28480) FUSE, CARTRIDGE F1 1 AMP, 250V	EA	1	*	*	*	*	*	*	50		F1	
XTHZZ		F0261R008 (81349) FUSEHOLDER XF1 EXTRACTOR POST TYPE	EA	1				*	*	*			XF1	
PAOZZ	5355-907-3460	342003 (75915) HANDLE, SWITCH 015 F/SWITCH 34.....	EA	1	*	*	*	*	*	*	3		015	
PAHZZ	5935-539-0457	G74AAAPS (28480) JACK, TELEPHONE J2 F/BOLOMETER.....	EA	2				*	*	*	3		J2	
PAHZZ	5935-539-0457	138 (82389) JACK, TELEPHONE J3 F/BOLOMETER.....	EA	REF				*	*	*			J3	
PACZZ	5355-5844163	138 (82389) KNOB 011 F/GAIN ADJUSTMENT	EA	1	*	*	*	*	*	*	3		011	
PACZZ	5355-601-1287	54MS368-2 (28480) KNOB 012 F/GAIN TUNING	EA	1	*	*	*	*	*	*	3		012	
PACZZ	5355-547-7996	G74LPS (28480) KNOB 013 F/BOLO XTAL AND RANGE TUNING..	EA	2	*	*	*	*	*	*	3		013	
PACZZ	5355-547-7996	G74NPS (28480) KNOB 014 F/BOLO XTAL AND RANGE TUNING..	EA	REF	*	*	*	*	*	*			014	
PACZZ	6240-155-8706	G74NPS (28480) LAMP, INCANDESCENT LM-52 I: F/POWER ON	EA	1	*	*	*	*	*	*	50		I1	
XDOZZ		MS15571-2 (96906) LENS, INDICATOR LIGHT F/LIGHT.....	EA	1	*	*	*	*	*	*				

(1) SMR CODE	(2) FEDERAL STOCK NUMBER	(3) DESCRIPTION REFERENCE NUMBER & MFR. CODE : USABLE ON CODE	(4) UNIT OF MEAS	(5) QTY INC IN UNIT	(6) 30-DAY DS MAINT ALLOWANCE			(7) 30-DAY GS MAINT ALLOWANCE			(8) 1-YR ALW PER 100 EQUIP CNTGCT	(9) DEPOT MAINT ALW PER 100 EQUIP	(10) ILLUSTRATION	
					(a)	(b)	(c)	(a)	(b)	(c)			(a)	(b)
					1-20	21-50	51-100	1-20	21-50	51-100			FIGURE NO	ITEM NO.
		CONTINUED												
		INDICATOR XII, RED CONVEX FROSTED 81-121 (72619)												
XDHZZ		LIGHT INDICATOR XII F/POWER ON..... INDICATOR 8108121 (72619)	EA	1				*	*	*				X11
PANDD	6625-682-4605	MIL TIMETER NI..... 1110-0044 (28480)	EA	1				*	*	*	3			M1
XDHZZ		RESISTOR, FIXED, COMPOSITION R49 33 OHM FORM10PCT, 1W RC32GF330K (81349)	EA	1				*	*	*				R49
PANZZ	5905-279-2643	RESISTOR, FIXED, COMPOSITION R28 100... OHM FORM10PCT, 1W RC32GF101K (81349)	EA	1				*	*	*	3			R28
PANZZ	5905-279-2602	RESISTOR, FIXED, COMPOSITION R1 160... OHM FORM5PCT, 1W RC32GF161J (81349)	EA	1				*	*	*	3			R1
XDHZZ		RESISTOR, FIXED, COMPOSITION R29 220... OHM FORM10PCT, 1W RC32GF221K (81349)	EA	2				*	*	*				R29
XDHZZ		RESISTOR, FIXED, COMPOSITION R38 220... OHM FORM10PCT, 1W RC32GF221K (81349)	EA	REF				*	*	*				R38
XDHZZ		RESISTOR, FIXED, COMPOSITION R32 330... OHM FORM10PCT, 1W RC32GF331K (81349)	EA	1				*	*	*				R32
XDHZZ		RESISTOR, FIXED, COMPOSITION R2 510... OHM FORM5PCT, 1W RC32GF511J (81349)	EA	1				*	*	*				R2
XDHZZ		RESISTOR, FIXED, COMPOSITION R39 680... OHM FORM10PCT, 1W RC32GF681K (81349)	EA	1				*	*	*				R39
XDHZZ		RESISTOR, FIXED, COMPOSITION R25 1000.. OHM FORM10PCT, 1W RC32GF102K (81349)	EA	1				*	*	*				R25
PANZZ	5905-279-2647	RESISTOR, FIXED, COMPOSITION R21 1500.. OHM FORM10PCT, 1W RC32GF152K (81349)	EA	2				*	*	*	3			R21
PANZZ	5905-279-2647	RESISTOR, FIXED, COMPOSITION R37 1500.. OHM FORM10PCT, 1W RC32GF152K (81349)	EA	REF				*	*	*				R37
XDHZZ		RESISTOR, FIXED, COMPOSITION R14 2700.. OHM FORM10PCT, 1W RC32GF272K (81349)	EA	1				*	*	*				R14
XDHZZ		RESISTOR, FIXED, COMPOSITION R10 3300.. OHM FORM10PCT, 1W RC32GF332K (81349)	EA	1				*	*	*				R10
XDHZZ		RESISTOR, FIXED, COMPOSITION R31 6800.. OHM FORM10PCT, 1W RC32GF682K (81349)	EA	1				*	*	*				R31
XDHZZ		RESISTOR, FIXED, COMPOSITION R48 10,000 OHM FORM10PCT, 1W RC32GF103K (81349)	EA	1				*	*	*				R48

(1) SMR CODE	(2) FEDERAL STOCK NUMBER	(3) DESCRIPTION REFERENCE NUMBER & MFR. CODE USABLE ON CODE		(4) UNIT OF MEAS	(5) QTY INC IN UNIT	(6) 30-DAY GS MAINT ALLOWANCE			(7) 36-DAY GS MAINT ALLOWANCE			(8) 1-YR ALW PER 100 EQUIP CONTACT	(9) DEPOT MAINT ALW PER 100 EQUIP	(10) ILLUSTRATION	
						(a)	(b)	(c)	(a)	(b)	(c)			(a)	(b)
						1-29	21-30	31-100	1-29	21-30	31-100			FIGURE NO.	ITEM NO.
PAHZZ	5905-250-6557	RESISTOR, FIXED, COMPOSITION OHM PORNLOPCT, 1W RC32GF273K (81349)	R19 27,000	EA	2				*	*	*		3		R19
PAHZZ	5905-250-6557	RESISTOR, FIXED, COMPOSITION OHM PORNLOPCT, 1W RC32GF273K (81349)	R29 27,000	EA	REF				*	*	*				R29
XDHZZ		RESISTOR, FIXED, COMPOSITION OHM PORNLOPCT, 1W RC32GF273K (81349)	R27 33,000	EA	1				*	*	*				
XDHZZ		RESISTOR, FIXED, COMPOSITION OHM PORNLOPCT, 1W RC32GF333K (81349)	R46 82,000	EA	1				*	*	*				R46
PAHZZ	5905-299-2004	RESISTOR, FIXED, COMPOSITION OHM PORNLOPCT, 1W RC32GF823K (81349)	R13 100...	EA	2				*	*	*		3		R13
PAHZZ	5905-299-2004	RESISTOR, FIXED, COMPOSITION OHM PORNLOPCT, 1W RC32GF104K (81349)	R44 100...	EA	REF				*	*	*				R44
XDHZZ		RESISTOR, FIXED, COMPOSITION OHM PORNLOPCT, 1W RC32GF104K (81349)	R34 150...	EA	2				*	*	*				R34
XDHZZ		RESISTOR, FIXED, COMPOSITION OHM PORNLOPCT, 1W RC32GF154K (81349)	R35 150...	EA	REF				*	*	*				R35
XDHZZ		RESISTOR, FIXED, COMPOSITION OHM PORNLOPCT, 1W RC32GF154K (81349)	R20 220...	EA	2				*	*	*				R20
XDHZZ		RESISTOR, FIXED, COMPOSITION OHM PORNLOPCT, 1W RC32GF214K (81349)	R24 229...	EA	REF				*	*	*				R24
XDHZZ		RESISTOR, FIXED, COMPOSITION OHM PORNLOPCT, 1W RC32GF224K (81349)	R41 270...	EA	2				*	*	*				R41
XDHZZ		RESISTOR, FIXED, COMPOSITION OHM PORNLOPCT, 1W RC32GF274K (81349)	R49 270...	EA	REF				*	*	*				R49
XDHZZ		RESISTOR, FIXED, COMPOSITION OHM PORNLOPCT, 1W RC32GF274K (81349)	R50 330...	EA	2				*	*	*				R50
XDHZZ		RESISTOR, FIXED, COMPOSITION OHM PORNLOPCT, 1W RC32GF334K (81349)	R51 330...	EA	REF				*	*	*				R51
XDHZZ		RESISTOR, FIXED, COMPOSITION OHM PORNLOPCT, 1W RC32GF334K (81349)	R52 390...	EA	1				*	*	*				R52
PAHZZ	5905-299-1993	RESISTOR, FIXED, COMPOSITION OHM PORNLOPCT, 1W RC32GF394K (81349)	R40 470...	EA	1				*	*	*		3		R40
XDHZZ		RESISTOR, FIXED, COMPOSITION OHM PORNLOPCT, 1W RC32GF474K (81349)	R30 560...	EA	1				*	*	*				R30
XDHZZ		RESISTOR, FIXED, COMPOSITION OHM PORNLOPCT, 1W RC32GF564K (81349)	R26 10 REF	EA	1				*	*	*				R26

(1) SMR CODE	(2) FEDERAL STOCK NUMBER	(3) DESCRIPTION REFERENCE NUMBER & MFR. CODE USABLE OH CODE		(4) UNIT OF MEAS	(5) QTY INC IN UNIT	(6) 30-DAY DS MAINT ALLOWANCE			(7) 30-DAY GS MAINT ALLOWANCE			(8) 1-YR ALW PER 100 EQUIP CATGCT	(9) DEPOT MAINT ALE PER EQUIP	(10) ILLUSTRATION		
						(a)	(b)	(c)	(a)	(b)	(c)			(a)	(b)	
						1-20	21-50	51-100	1-20	21-50	51-100			FIGURE NO.	ITEM NO.	
		CONTINUED														
XDBZZ		RC32GF106K (81349)		EA	1				*	*	*					R8
		RESISTOR, FIXED, FILM 20 20 OHM.....														
XDBZZ		RC32GF106K (81349)		EA	1				*	*	*					R7
		RESISTOR, FIXED, FILM R7 180 OHM.....														
PAHZZ	5905-061-4031	RM65020R0F (81349)		EA	1				*	*	*		3			R6
		RESISTOR, FIXED, FILM R6 1800 OHM.....														
PAHZZ	5905-814-0736	RM4901821F (81349)		EA	1				*	*	*		3			R5
		RESISTOR, FIXED, FILM R5 18,000.....														
XDBZZ		RM6501822F (81349)		EA	2				*	*	*					R12
		RESISTOR, FIXED, FILM R12 20,000 OHM...														
XDBZZ		MF6C02002F (19701)		EA	REF				*	*	*					R18
		RESISTOR, FIXED, FILM R18 20,000 OHM...														
PAHZZ	5905-079-6535	MF6C02002F (19701)		EA	1				*	*	*		3			R19
		RESISTOR, FIXED, FILM R19 926,000 OHM..														
XDBZZ		RM6509912F (81349)		EA	1				*	*	*					R9
		RESISTOR, FIXED, FILM R9 100,000 OHM..														
PAHZZ	5905-071-2605	RM75A1009F (81349)		EA	1				*	*	*		3			R16
		RESISTOR, FIXED, FILM R16 136,700 OHM..														
PAHZZ	5905-811-4661	RM6501373C (81349)		EA	3				*	*	*		3			R4
		RESISTOR, FIXED, FILM R4 180,000 OHM..														
PAHZZ	5905-811-4661	RM6501823F (81349)		EA	REF				*	*	*					R11
		RESISTOR, FIXED, FILM R11 180,000 OHM..														
PAHZZ	5905-811-4661	RM6501823F (81349)		EA	REF				*	*	*					R17
		RESISTOR, FIXED, FILM R17 180,000 OHM..														
PAHZZ	5905--539-3072	RM6501823F (81349)		EA	1				*	*	*		3			R47
		RESISTOR, FIXED, WIRE WOUND R47 15,000.														
XDBZZ		OHM PORN10PCT, 10W A10F153 (12697)		EA	1				*	*	*					R3
		RESISTOR, FIXED, WIRE WOUND R3 20,000.														
PAHZZ	5905-501-5184	OHM PORN10PCT, 10W 1-3-4E (35434)		EA	2				*	*	*		3			R33
		RESISTOR, VARIABLE, COMPOSITION R33 50.														
PAHZZ	5905-501-5184	RV4LXSA803B (81349)		EA	REF				*	*	*					R45
		RESISTOR, VARIABLE, COMPOSITION R45 50.														
PAHZZ	5905-539-2153	RV4LXSA803B (81349)		EA	1				*	*	*		3			R22
		RESISTOR, VARIABLE, COMPOSITION R22.....														
		CONTINUED														

(1) SMR CODE	(2) FEDERAL STOCK NUMBER	(3) DESCRIPTION REFERENCE NUMBER & MFR. CODE USABLE ON CODE	(4) UNIT OF MEAS	(5) QTY INC IN UNIT	(6) 30-DAY DS MAINT ALLOWANCE			(7) 30-DAY OS MAINT ALLOWANCE			(8) 1-YR ALW PER 100 EQUIP CNTGCT	(9) DEPOT MAINT ALW PER 100 EQUIP	(10) ILLUSTRATION	
					(a)	(b)	(c)	(a)	(b)	(c)			(a)	(b)
					1-20	21-50	51-100	1-20	21-50	51-100			FIGURE NO.	ITEM NO.
		CONTINUED FRONT SECT 500,000 OHM PORN30PCT, REAR SECT 100,000 OHM PORN30PCT, 1/2W SA99L-100 (71500)												
PAHZZ	5969-833-2607	SEMICONDUCTOR, DEVICE, DIODE CR1..... GERMANIUM 1N935 (81349)	EA	2				*	*	*		3		CR1
PAHZZ	5361-853-2607	SEMICONDUCTOR, DEVICE, DIODE CR2..... GERMANIUM 1N935 (81349)	EA	REF				*	*	*				CR2
PAOZZ	5960-860-7710	SHIELD, ELECTRON TUBE E1 F/ELECTRON... TUBE V1 M24231-6-5 (81349)	EA	1	*	*	*	*	*	*		10		E1
PAHZZ	5935-606-7909	SOCKET, ELECTRON TUBE XV1 9 PIN..... MINIATURE 44820965 (71785)	EA	1				*	*	*		3		XV1
XDHEZ		SOCKET, ELECTRON TUBE XV3 9 PIN NOVAL . 377PHSP7D (91662)	EA	2				*	*	*				XV3
XDHEZ		SOCKET, ELECTRON TUBE XV2 9 PIN NOVAL . 377PHSP7D (91662)	EA	REF				*	*	*				XV2
PAHZZ	5935-812-9142	SOCKET, ELECTRON TUBE XV4 7 PIN..... MINIATURE 3168C (91662)	EA	3				*	*	*		3		XV4
PAHZZ	5935-812-9142	SOCKET, ELECTRON TUBE XV5 7 PIN..... MINIATURE 3168C (91662)	EA	REF				*	*	*				XV5
PAHZZ	5935-812-9142	SOCKET, ELECTRON TUBE XZ1 7 PIN..... MINIATURE 3168C (91662)	EA	REF				*	*	*				XZ1
PAHZZ	5935-257-6870	SOCKET, ELECTRON TUBE XV6 OCTAL 51A12272 (71785)	EA	2				*	*	*		3		XV6
PAHZZ	5935-257-6870	SOCKET, ELECTRON TUBE XV7 OCTAL 51A12272 (71785)	EA	REF				*	*	*				XV7
PAHZZ	5930-682-0566	SWITCH, LEVER S4 METER SCALE ADJ SW .. FA220-196 (71590)	EA	1				*	*	*		5		S4
PAHZZ	5930-682-0562	SWITCH, ROTARY S3 F/BOLO XTAL..... SELECTOR 67200H1 (76854)	EA	1				*	*	*		5		S3
XDHEZ		SWITCH, ROTARY S5 F/LEVEL SETTING 67201M3 (76854)	EA	1				*	*	*				S5
PAHZZ	5930-231-1491	SWITCH, TOGGLE S1 SPST..... 8280K16 (27191)	EA	2				*	*	*		5		S1
PAHZZ	5930-231-1491	SWITCH, TOGGLE S2 SPST 8280K16 (27191)	EA	REF				*	*	*				S2
PAHZZ	5950-588-4946	TRANSFORMER, AUDIO FREQUENCY T2..... 912-47PS (28480)	EA	1				*	*	*		3		T2
PAHZZ	5950-807-4542	TRANSFORMER, POWER, STEP-UP/STEP-DOWN..... T1 9100-0059 (28480)	EA	1				*	*	*		3		T1
PADDL	5985-752-5826	ADAPTER NO-REF-DESIG.....	EA	1								4		
PADDL	5985-082-3519	ADAPTER, COAXIAL TO WAVEGUIDE CONTINUED	EA	1								4		

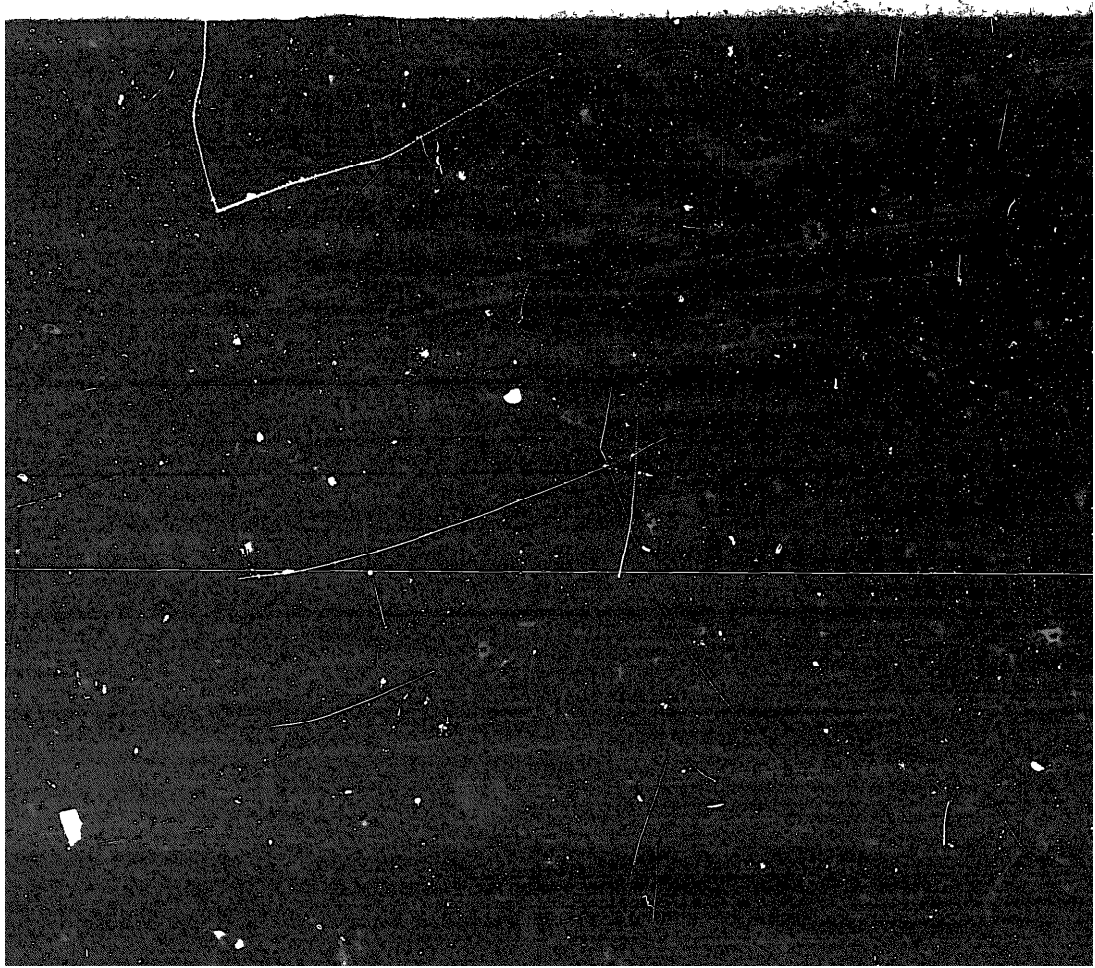
(1) SMR CODE	(2) FEDERAL STOCK NUMBER	(3) DESCRIPTION REFERENCE NUMBER & MFR. CODE USABLE ON CODE		(4) UNIT OF MEAS	(5) QTY INC IN UNIT	(6) 30-DAY DS-MAINT ALLOWANCE			(7) 30-DAY GS-MAINT ALLOWANCE			(8) 1-YR ALW PER 100 EQUIP CMTGCTY	(9) DEPOT MAINT ALW PER 100 EQUIP	(10) ILLUSTRATION		
						(a)	(b)	(c)	(a)	(b)	(c)			(a)	(b)	
						1-20	21-50	51-100	1-20	21-50	51-100			FIGURE NO.	ITEM NO.	
CONTINUED																
PADDL	5985-264-9212	US1053U (80058)	ADAPTER, COAXIAL TO WAVEGUIDE	EA	1										
FADDL	6625-295-8144	UG1054U (80058)	CORD (6 FT 0 IN)	EA	1										
PADDL	5995-504-7185	CG92DU (80058)	CORD CABLE ASSY. RADIO	(10.	EA	1										
PADHL	6625-682-4493	CG409EU10-2 (80058)	INDICATOR, STANDING WAVE	EA	1										
PADDL	6625-581-5802	IN157U (80058)	PROBE, WAVEGUIDE	EA	1										
XDDL		MX1544USN37 (2848G)	SLOTTED LINE	EA	1										
PADDL	6625-752-5724	IN100USN37 (80058)	WAVEGUIDE ASSEMBLY	EA	1										
PADDL		CG1104USN37 (80058)	WAVEGUIDE ASSEMBLY	EA	1										
PADDL		CG1107USN37 (80058)	WAVEGUIDE ASSEMBLY	EA	1										

**INDEX - FEDERAL STOCK NUMBER AND REFERENCE NUMBER
CROSS-REFERENCE TO FIGURE AND ITEM NUMBER**

STOCK NUMBER	FIGURE NO.	ITEM NO.	STOCK NUMBER	FIGURE NO.	ITEM NO.
5310-763-8581		01	5910-280-6937		C3
5340-763-8581		02			
5340-763-8581		03			
5340-763-8581		04	5910-617-4059		C4
5355-547-7996		13	5910-617-4059		C3
5355-547-7996		14	5910-667-6596		C10
5355-584-4163		11	5910-667-6396		C2
5355-801-1287		12			
5355-907-3460		15			
5905-061-4031		R4			
5905-071-2605		R16	5910-825-3252		C1
5905-079-6535		R19	5915-701-4023		Z1
			5920-284-9220		F1
5905-250-6557		R15	5930-231-1491		E1
5905-250-6557		R23	5930-231-1491		E2
			5930-802-0902		E3
			5930-682-0566		E4
			5935-257-6870		XV6
			5935-257-6870		XV7
5905-279-2602		R1	5935-530-8457		J2
			5935-539-0457		J3
5905-279-2643		R28	5935-606-7909		XV1
5905-279-2647		R21	5935-436-7145		F1
5905-279-2647		R37	5935-665-5718		J1
			5935-012-9142		XV4
			5935-012-9142		XV3
5905-299-1993		R40	5935-012-9142		XZ1
			5950-580-4946		T2
			5950-807-4542		T1
5905-299-2004		R13	5960-166-7664		V1
5905-299-2004		R44	5960-166-7664		V2
			5960-188-0943		V4
			5960-262-0151		V3
			5960-860-7710		E1
5905-501-5184		R33	5960-880-0457		V3
5905-501-5184		R43	5961-053-2607		CR1
			5961-853-2607		CR2
			5985-082-3519		
5905-539-2153		R22	5985-264-9212		
5905-539-3072		R47	5985-752-5826		
			5995-504-7185		
			6145-284-0579		W1
			6240-155-8706		I1
5905-811-46641		R11	6625-295-8144		
5905-811-4661		R17	6625-581-5802		
5905-811-4661		R4	6625-643-0155		
5905-814-0736		R5	6625-682-4493		
			6625-682-4605		
5910-280-6967		C11	6625-752-5724		M1

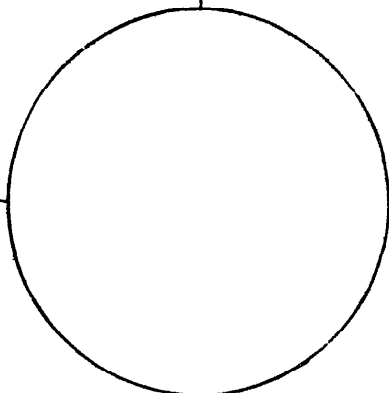
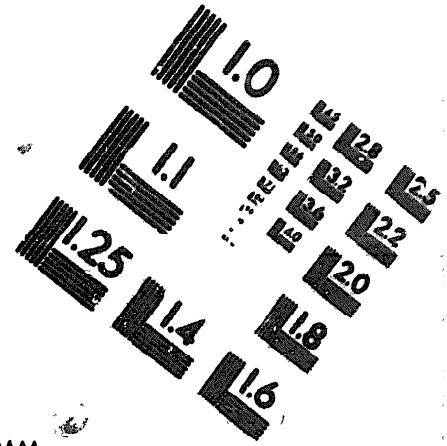
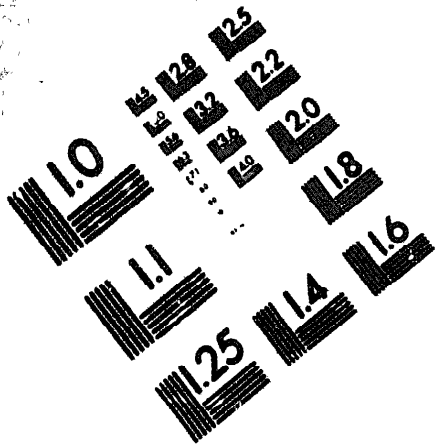
REFERENCE NO.	MFR CODE	FIG. NO.	ITEM NO.	REFERENCE NO.	MFR CODE	FIG. NO.	ITEM NO.
A10F153				EP375-8	37942		C3
BA991-100	12697		R47	EPE75-8	37942		C11
BR500-15	71590		R22	F02G1R008	81349		F1
BR500-15	14635		C2	G74AAAPS	28480		O15
CG1106USM37	14635		C10	G74LPS	28480		O12
CG1107USM37	80058			G74NPS	28480		O13
CG409EU10-2	80058			G74NPS	28480		O14
CG92D0	80058			HX292B	28480		
CP09A1KF472K3	81349		C4	IH100USH37	80058		
CP09A1KF472K3	81349		C5	IH157U	80058		
C0-03MGF3-10-0330	81349		W1	HF6CD2002F	19701		R12

REFERENCE NO.	NPR CODE	FIG. NO.	ITEM NO.	REFERENCE NO.	NPR CODE	FIG. NO.	ITEM NO.
RF6C02002F	19701		R10	RV4LAXSA5938	81349		R45
RS15571-2	96906		R11	US1853U	80800		
RK1546USH37	20400			UG1G34U	80800		
R26251-6-5	81349		R1	UG1094U	81349		R1
PAZ23-196	71990		R4	UP121M	81349		R1
RC32GF101K	81349		R20	002	81350		R7
RC32GF102K	81349		R25	1-3-4F	80404		R8
RCB2GE103K	81349		R40	1N933	81349		R21
RC32GF104K	81349		R13	1N933	81349		R22
RC32GF1G4K	81349		R44	109P10396	80209		R1
RC32GF106K	81349		R26	109P10494	80209		R9
RG32GF052K	81349		R21	109P10494	80209		R12
RC32GF152K	81349		R27	109P10494	80209		R13
RC32GF154K	81349		R24	109P22286	80209		R6
RC32GF154K	81349		R25	109P47396	80209		R7
RC32GF161J	81349		R1	109P47396	80209		R8
RC32GF221K	81349		R29	1128-6944	20400		R8
RC32GF221K	81349		R20	12AX7	81350		R1
RC32GF224K	81349		R20	12AX7	81350		R2
RC32GF224K	81349		R24	138	82309		R2
RC32GF272K	81349		R14	138	82309		R5
RC32GF273K	81349		R15	3168C	91662		RV5
RC32GF273K	81349		R23	3168C	91662		RV5
RC32GF274K	81349		R41	316GC	91662		R21
RC32GF274K	81349		R43	342003	79015		R21
RC32GF330K	81349		R49	342003SA2	79015		R21
RC32GF321K	81349		R22	377PHSPTD	91662		RV2
RC32GF352K	81349		R10	377PHSPTD	91662		RV3
RC32GF333K	81349		R27	39-90PS	20400		R1
RC32GF334K	81349		R50	39-90PS	20400		R2
RC32GF334K	81349		R51	39-90PS	20400		R3
RC32GF394K	81349		R52	39-90PS	20400		R4
RC32GF474K	81349		R40	415B42APS	20400		R1
RC32GF511J	81349		R2	44B20965	71705		RV1
RC32GF564K	81349		R30	51A12272	71705		RV6
RC32GF601K	81349		R39	51A12272	71705		RV7
RC32GF682K	81349		R31	54HS360-2	20400		R11
RC32GF823K	81349		R46	6AU5GY	81350		R5
RN6501373C	81349		R16	6AX5GT	80131		R6
RN6501021F	81349		R6	6C06	81350		R8
RN6501022F	81349		R5	6DJ8	81349		R3
RN65D1023F	81349		R4	67200H1	76054		R3
RN65D1023F	81349		R11	67281H3	76054		R3
RN65D1823F	81349		R17	01-121	72619		
RN65D20R0F	81349		R7	810B121	72619		R11
RN65D20R0F	81349		R8	8280K16	27191		R1
RN6509312F	81349		R19	8280K16	27191		R2
RN75A1003F	81349		R9	9100-0059	20400		R1
RV4LAXSA503B.	81349		R33	612-47PS	20400		R2



DEPARTMENT OF THE ARMY

MICROFORM
TEST TARGET



150 MM

1.0 mm (e= .81 mm)

ABCDEFGHIJKLMN O PQRSTU VWXYZ 1234567890
abcdefghijklmnopqrstuvwxyz \$%& /%# 1/2 1/4 3/4 — + x & @ *

1.5 mm (e= 1.09 mm)

ABCDEFGHIJKLMN O PQRSTU VWXYZ 1234567890
abcdefghijklmnopqrstuvwxyz \$%& /%# 1/2 1/4 3/4 — + x & @ *

2.0 mm (e= 1.37 mm)

ABCDEFGHIJKLMN O PQRSTU VWXYZ
abcdefghijklmnopqrstuvwxyz
1234567890 \$%& /%# 1/2 1/4 3/4 — + x & @ *

2.5 mm (e= 1.77 mm)

ABCDEFGHIJKLMN O PQRSTU VWXYZ
abcdefghijklmnopqrstuvwxyz
1234567890 \$%& /%# 1/2 1/4 3/4 — + x & @ *

1.0 mm (e= .81 mm)

ABCDEFGHIJKLMN O PQRSTU VWXYZ 1234567890
abcdefghijklmnopqrstuvwxyz \$%& /%# 1/2 1/4 3/4 — + x & @ *

1.5 mm (e= 1.09 mm)

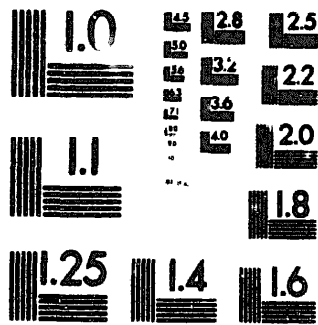
ABCDEFGHIJKLMN O PQRSTU VWXYZ 1234567890
abcdefghijklmnopqrstuvwxyz \$%& /%# 1/2 1/4 3/4 — + x & @ *

2.0 mm (e= 1.37 mm)

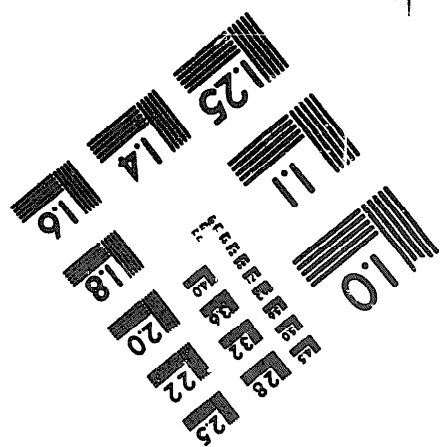
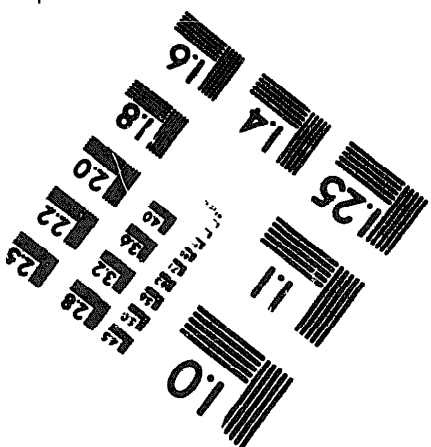
ABCDEFGHIJKLMN O PQRSTU VWXYZ
abcdefghijklmnopqrstuvwxyz
1234567890 \$%& /%# 1/2 1/4 3/4 — + x & @ *

2.5 mm (e= 1.77 mm)

ABCDEFGHIJKLMN O PQRSTU VWXYZ
abcdefghijklmnopqrstuvwxyz
1234567890 \$%& /%# 1/2 1/4 3/4 — + x & @ *



200 MM



250 MM

By Order of the Secretary of the Army:

FRED C. WEYAND
General, United States Army
Chief of Staff

Official:

VERNE L. BOWERS
Major General, United States Army
The Adjutant General

Distribution:

Active Army.

USASA (2)
CNGB (1)
Dir of Trans (1)
COE (1)
TSG (1)
USAARENBD (1)
AMC (1)
TRADOC (2)
ARADCOM (2)
ARADCOM Prgn (2)
OS Maj Comd (4)
LOGCOMDS (3)
MICOM (2)
TECOM (2)
USACC (4)
MDW (1)
Armies (2)
Corps (2)
HISA (Ft Monmouth) (18)
Svc Colleges (1)
USASESS (6)
USAADS (2)
USAFAS (2)
USAARMS (2)
USAIS (2)
USAES (2)
USAINTC (3)
WRAMC (1)

ATS (1)
Fort Gordon (10)
Fort Huachuca (10)
WSMR (1)
Fort Carson (5)
Ft Richardson (ECOM Off) (2)
Army Dep (1) except
LEAD (14)
SAAD (30)
TOAD (14)
ATAD (10)
USA Dep (2)
Sig Sec USA Dep (2)
Sig Dep (2)
Sig FLDMS (1)
USAERDAA (1)
USAERDAW (1)
MAAG (1)
USARMIS (1)
Units org under fol TOE:
(1 copy each unit)
11-16
11-97
11-117
11-500(AA-AC)
32-56
32-57

NG: None

USAR: None

For explanation of abbreviations used, see AR 310-50.

END

7-25-83

DATE

